



From left:
JACK CHAN
 Director
GARY WONG
 Director
JORDAN LEE
 Designer
JOHN CHAN
 Director

NEU KONCEPTZ

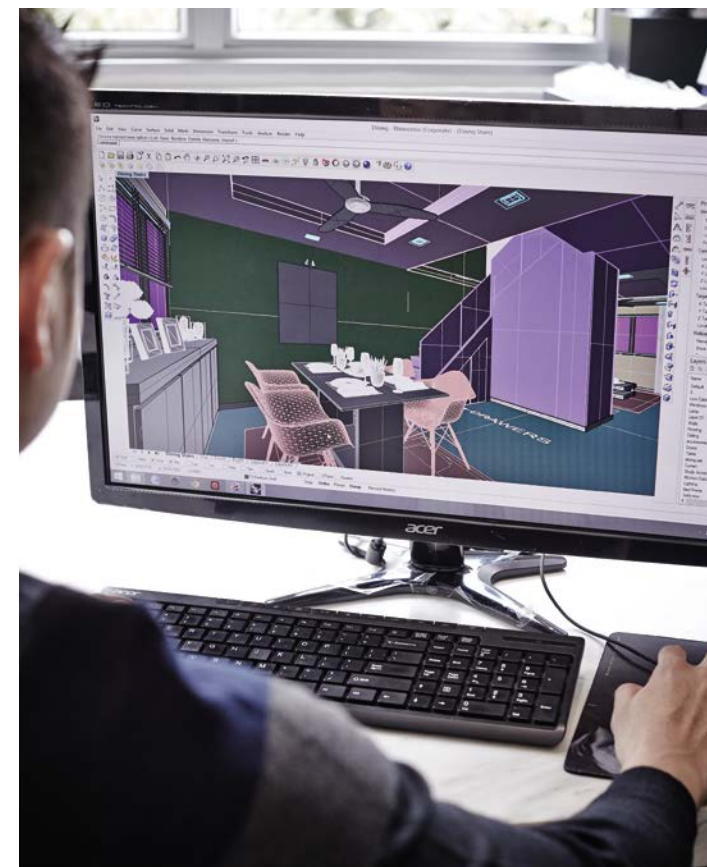
Perhaps it was because the idea to form their own interior design firm came over a cup of coffee in 2011 that Neu Konzeptz's office has the easy feel of a café bar. Or perhaps the chill ambience could be because the three founders, Gary Wong and brothers John and Jack Chan, have an easy-going relationship that extends towards their staff and clients. The three – who've been in the industry for almost a decade, including before and since they set up their own firm – are serious go-getters, too, who truly think outside of the box. This has led to establishing the Youth Interior Design Competition in 2014, for design students. That same year, Neu Konzeptz joined the prestigious International Design Awards (IDA), which designers from around the world enter. They won silver in the interior design category for their residential project at Trillum.

While Neu Konzeptz concentrated on earning their BizSafe Level 3 Status by Workplace Safety and Health Council Singapore (WSHC), integrating home automation in their services, and growing their staff in 2015, they have exciting plans for 2016. "The Youth Interior Design Competition was our way of giving back to the industry that has given us much, and where we have grown up, so we are looking forward to holding the competition again this year," John says. They expect business to grow, too, and the dynamic team will be flexing their creative muscle to continue to "bring a new experience to our clients in creating their ideal home. After all, that's what our name is about."

(right) Jack sketches an interior perspective on the glass partition between their work stations and the conference room and pantry.

(right, below) Neu Konzeptz keeps their framed citation of the 2014 International Design Awards (IDA) on the conference room wall for inspiration.

(below) Jordan works on the bones of 3D rendering.



"Our core belief is that design can inspire and influence market trends and lifestyle. We emphasise a lot of our work on design with functionality; a well designed home is a place that people look forward to after a day of hard work."



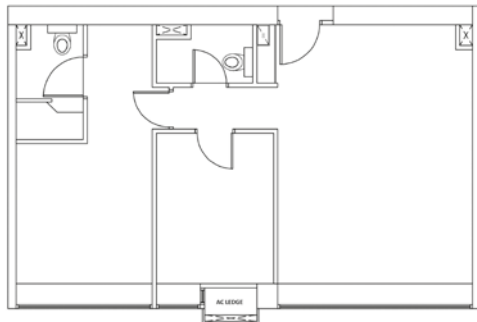
NEU KONCEPTZ

1057 Eunos Ave 3
 #04-81 Singapore 409848
 Tel (65) 6746 3723
 Fax (65) 6746 8046

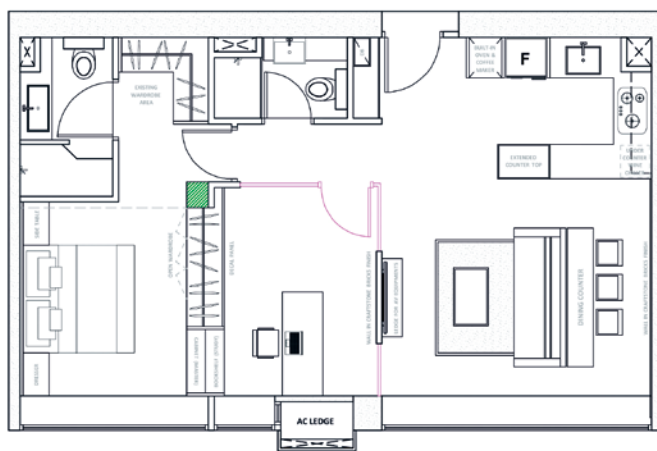
enquiries@neukonceptz.com.sg
 www.neukonceptz.com.sg

PROJECT TYPE 2-bedroom condominium
FLOOR AREA 800 sqft

FLOORPLANS



BEFORE



AFTER

Neu Konzeptz transformed the two-bedroom unit into a comfortable abode for one, with enough space for the owner's live-work-play requirements.

Industrial-inspired bachelor pad

John Chan and Jack Chan, designing brothers from Neu Konzeptz, were given free rein by the homeowner, an Indonesian Chinese businessman who travels frequently, to transform this compact space into a unique yet comfortable home that has a character all its own.

TEXT VERLAINE MARQUEZ



Textures abound

"A unique feature here is there is no white wall at all. Except for some brick wall finishes, all the walls and ceilings have a cement screed look," says John Chan. It serves as the perfect low-key background for all the industrial-inspired and modern furnishings in the living area – from the clean-lined L-shaped sofa and trunk coffee table, to the exposed light fittings and wire mesh door and panels of the study.



Cooking zone

The original white kitchen doesn't suit the look the designers were going for, so they had all the cabinets re-laminated. They also replaced the countertops with Caesarstone quartz surface for easier maintenance. Even though the owner doesn't cook a lot, they still made sure the kitchen is well-equipped and has plenty of counter space.

"We wanted to keep the 'luxury' aspect of the apartment, yet give it the industrial look requested by the client, with a unique character all its own."

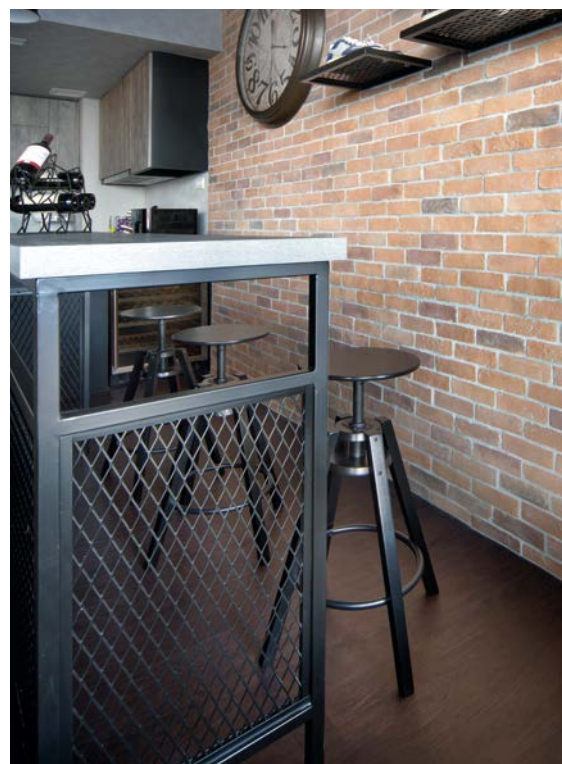
John Chan, designer, Neu Konzeptz





Sneakerhead

The brick wall serves as an interesting backdrop for the owner's collection of Nike limited edition shoes, which are on display on built-in wire mesh shelves in the living-dining area.



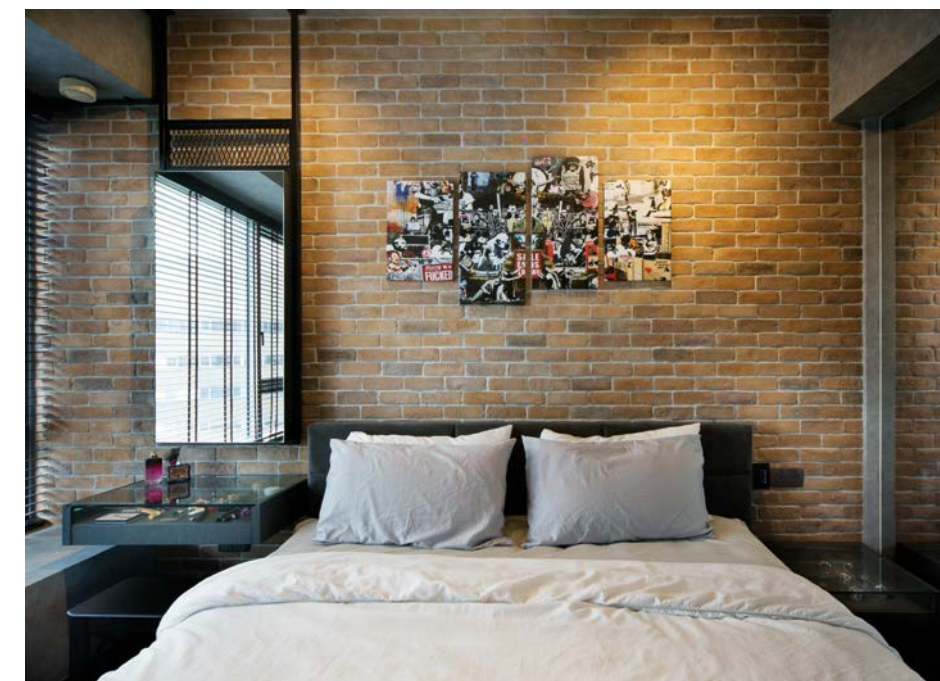
Effortless dining

The designers opted for a bar-height dining counter and bar stools, instead of the traditional dining set, to maximise the living-dining area. This way, the owner can also watch TV comfortably while eating on a proper tabletop.



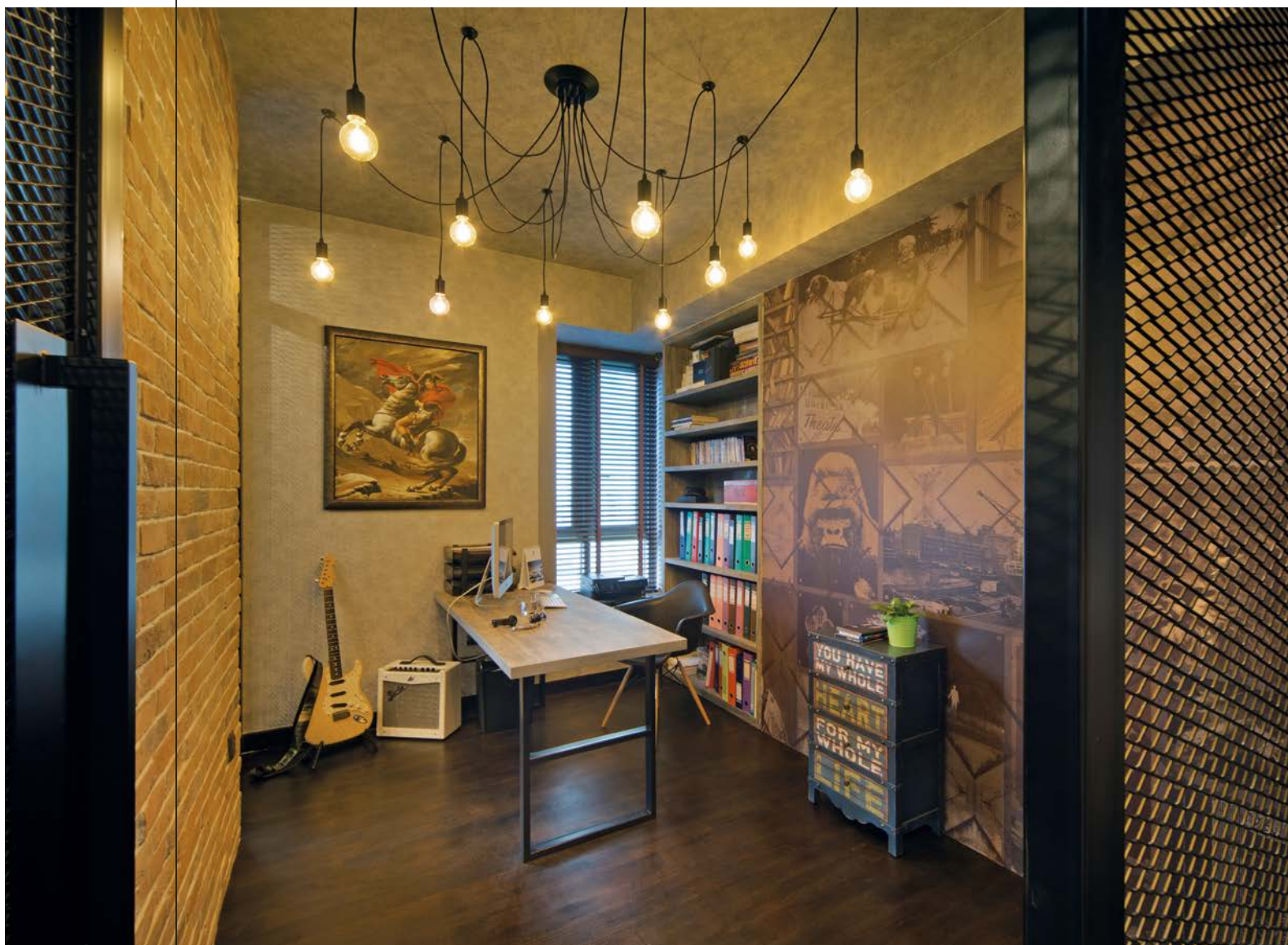
Man cave

John and Jack pushed out the study towards the living area so the owner can enjoy a bigger study. The wall between the bedroom and the study was also replaced with back-to-back cabinets to form a separation and for acoustic purposes. A decal-panelled wall adds an artistic touch, while hanging light bulbs infuse warmth into the space.



Restful slumber

To harmonise with the industrial theme, the brick wall finish is continued in the bedroom, as well as the powder coated steel metal frames. The designers also stained the parquet to a dark walnut colour. They used an open wardrobe system for easy access, and strategically placed mirrors to visually expand the space.



“The owner is a bachelor in his mid-30s. He travels frequently; and is a man who knows how to appreciate and enjoy life. He doesn’t cook. Hobbies include basketball, golf and cars – we translated this into an industrial-style space that brings together his varied interests.”

John Chan, designer, Neu Konzeptz